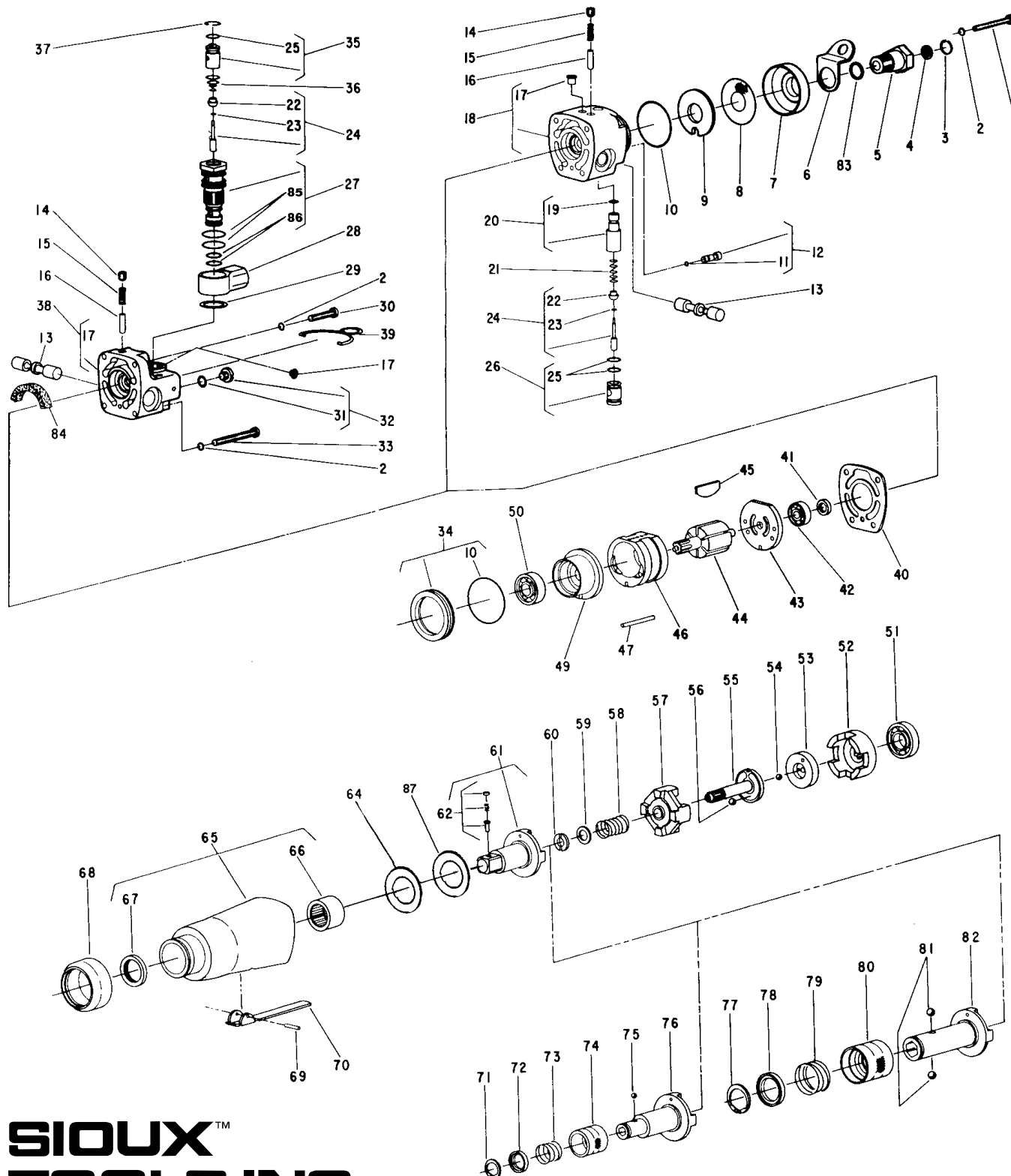




PARTS LIST FOR 4090, 4091, 4093, 4094 AIR IMPACT WRENCHES AND 4092, 4095, 4096 SCREW DRIVERS



**SIoux™
TOOLS INC.**

2901 FLOYD BOULEVARD ■ PO BOX 507 ■ SIOUX CITY, IOWA 51102-0507 ■



PARTS LIST FOR 4090, 4091, 4093, 4094 AIR IMPACT WRENCHES AND 4092, 4095, 4096 SCREW DRIVERS

Fig. No.	Part No.	Name	Fig. No.	Part No.	Name
1.	06603	Screw (#8-32 x 1-1/2)(4)*	45.	33940	Vane—Rotor (Set of 6)
2.	09712	Lock washer (#8)(4)*	46.	44737	Cylinder
3.	21541	Retainer	47.	30424	Pin—Alignment
4.	30463	Screen	49.	53214	Ass'y.—Front End Plate
5.	53942	Adapter—Intake (Incl. Fig. 3, 4, & 78)	40.	10221	Bearing—Ball
6.	35192	Bail	51.	10203	Bearing—Ball
7.	44692	Deflector—Air	52.	54810	Frame—Hammer
8.	30470	Screen	53.	44673	Bearing—Spindle Cam
9.	14779	Gasket	54.	10306	Ball—3/16
10.	14313	Ring—"O" (2)*	55.	44309	Cam—Spindle
11.	14349	Ring—"O"	56.	10291	Ball—7/32
12.	43518	Ass'y.—Valve Seat Retainer & "O" Ring	57.	11558	Hammer—Aux. Impact
13.	44684	Valve—Reversing	58.	21404	Spring
14.	08001	Screw	59.	35094	Washer
15.	41213	Spring	60.	35093	Washer—Split (2)*
16.	44682	Plunger—Reversing Valve	61.	54814	Anvil—1/2" Sq. Dr. (4091, 4094)
17.	30356	Fitting—Grease		54813	Anvil—3/8" Sq. Dr. (4093, 4090)
18.	53947	Ass'y.—Back Cap (Incl. Fig. 5 & 10)	62.	33465	Ass'y.—Socket Retainer (For 3/8" Sq.)(4090, 4093)
19.	14308	Ring—"O"		43890	Ass'y.—Socket Retainer (For 1/2" Sq.)(4091, 4094)
20.	43578	Ass'y.—Output Control & "O" Ring	64.	10053	Washer
21.	21372	Spring	65.	63124	Ass'y.—Hammer Case
22.	14325	Valve	66.	10056	Bearing—Needle
23.	25957	Washer	67.	30258	Seal
24.	43515	Ass'y.—Valve	68.	14351	Protector—Rubber
25.	14311	Ring—"O" (2)*	69.	30632	Pin—Roll
26.	43516	Ass'y.—Throttle Valve Seat & "O" Ring	70.	35191	Lever
27.	43547	Ass'y.—Valve Seat & "O" Rings	71.	21501	Ring—Retainer (4093, 4095)
28.	13221	Swivel—Hose	72.	44660	Ring—Guide
29.	35030	Washer	73.	21406	Spring (4092, 4095)
30.	06605	Screw (#8-32 x 3/4")(2)*	74.	44161	Retainer—Ball
31.	14291	Ring—"O"	75.	10902	Ball—5/32 (4092, 4095)
32.	53300	Ass'y.—Locking Screw & "O" Ring	76.	54815	Anvil—1/4" Hex (4092, 4095)
33.	06603	Screw (#8-32 x 1-1/2")(2)*	77.	21524	Ring (4096)
34.	63167	Ass'y.—Motor Location Sleeve & "O" Ring	78.	44239	Ring Guide (4096)
35.	43548	Ass'y.—Output Control & "O" Ring	79.	21414	Spring (4096)
36.	41214	Spring	80.	44238	Retainer (4096)
37.	21541	Ring—Retainer	81.	10299	Ball—1/4 (2)* (4096)
38.	43536	Ass'y.—Back Cap.	82.	54816	Anvil—7/16 Hex (4096)
39.	21447	Bail	83.	14312	Ring—"O"
40.	14777	Gasket	84.	14093	Pad—Silencer (4090, 4091, 4092)
41.	30498	Seal	85.	14281	Ring—"O"
42.	10219	Bearing—Ball	86.	14290	Ring—"O"
43.	10553	Ass'y.—Rear End Plate	87.	10052	Bearing—Needle Thrust
44.	44846	Rotor			

*Order Quantity As Needed

SIouxTM
TOOLS INC.

FURNISH CATALOG, SERIAL, AND MODEL NUMBER
WHEN ORDERING PARTS

2901 FLOYD BOULEVARD ■ PO BOX 507 ■ SIOUX CITY, IOWA 51102-0507 ■